

## IR Link Software Quick Reference Guide

### Getting started

In order to interact with a TOCSIN Personal Monitor, ensure that the IR Link is plugged into a computer.

1. Place the TOCSIN face down—at least 2 inches in front of the IR Reader with the top side facing the IR Reader.
2. Click “Read Device.”
3. If the read was successful, a green bar will appear at the bottom of the screen (shown below).

### Changing Settings

The TOCSIN allows users to change the following fields:

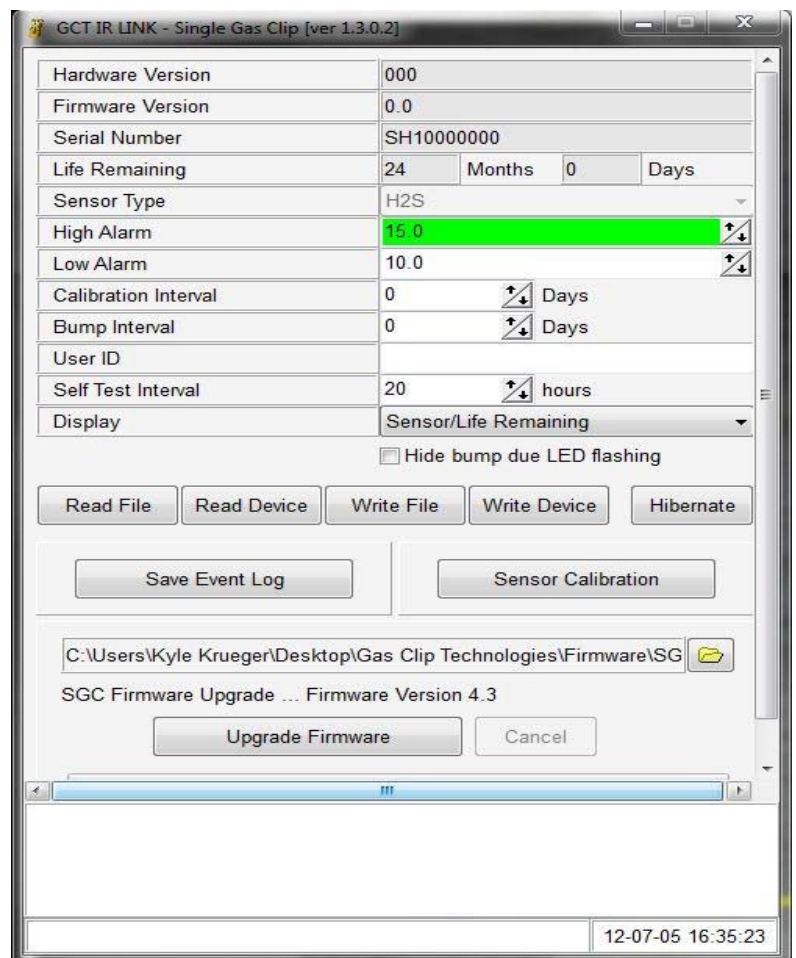
- **High Alarm/Low Alarm Set**  
**Points:** Adjust the high/low alarm set point.

*NOTE: Ensure alarm set points are in compliance with local/site guidelines.*

- **Bump Interval:** Users can set a bump test interval. If a unit has not been bump tested within the selected time frame, the unit will alert the user by flashing “bUP” across the screen and flashing the LED’s, alternating every 5 seconds. These alerts will continue until the unit has been tested either manually or via the Docking Station.
- **User ID:** Users can program a unique electronic user ID into each unit. User ID’s can contain a maximum of 6 total characters.

*NOTE: Some alphabetic characters do not display well.*

- **Self-Test Interval:** By default, all TOCSINs have a default 20-hour Self-Test interval. Self-Test intervals can be set anywhere from 8 to 20 hours.



*Changing Settings cont. . . .*

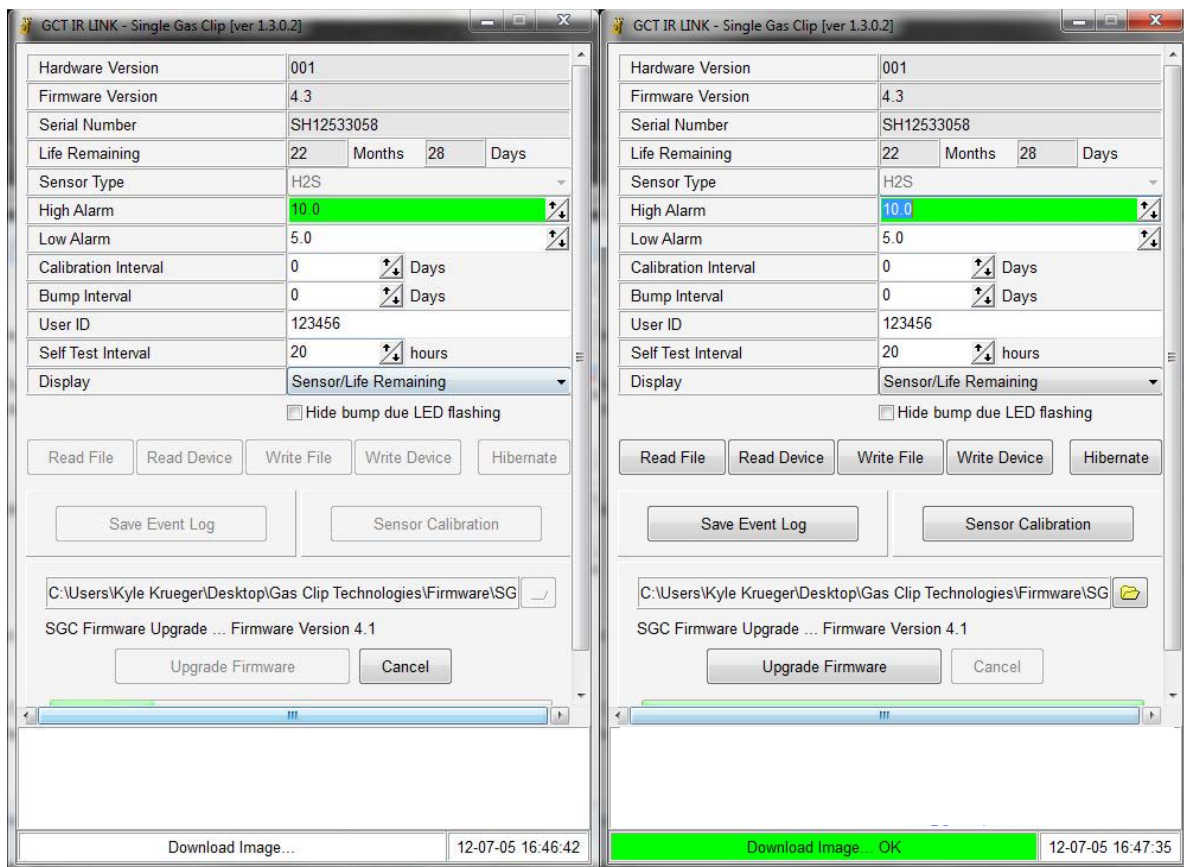
- **Hide bump due LED Flashing:** If users prefer to not have the units flash when due for a bump test, please make sure to check this box.

## Changing Settings – Display Options

The following display options are able to be changed:

- **Sensor/Life Remaining:** This is the default setting for all units. In normal operation the unit will display the life remaining. Once the unit starts to sense gas, the unit will display the gas concentration detected.
- **Life Remaining:** When this option is selected the unit will always display life remaining. When gas is detected, the unit will go into alarm however the concentration will not be displayed.
- **Sensor Reading:** This will turn the monitor into a real time ppm display monitor. Life remaining will not be displayed.

Click the “Write Device” button to make the changes in the instrument. If a successful write has occurred, users will see a green bar at the bottom.

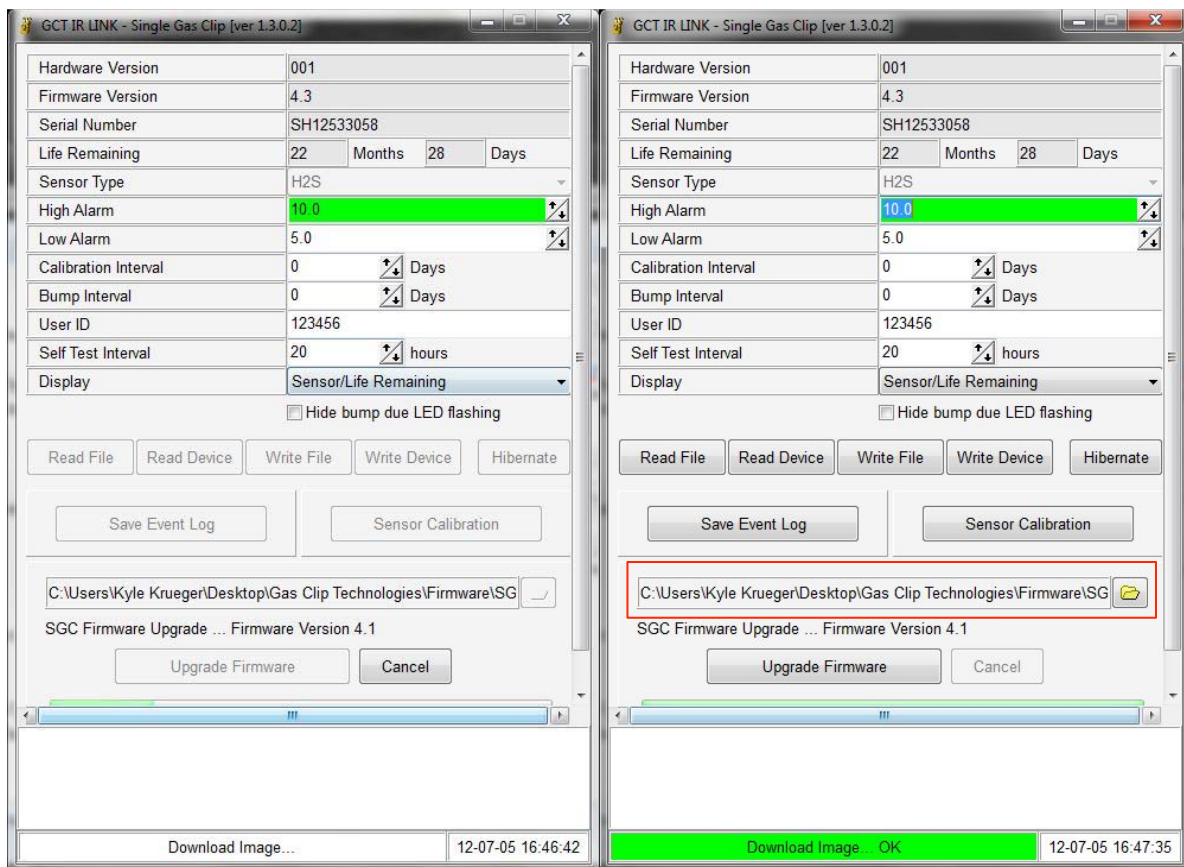


## Firmware Upgrade Instructions

The TOCSINs allow for firmware upgrades to occur during the lifetime of the unit. Most firmware upgrades are not required unless notified by Otis Instruments. To see if your unit has the most current version please visit [www.otisinstruments.com](http://www.otisinstruments.com) or contact the Otis Instruments Service Department at 903.566.1300.

In order to perform a firmware upgrade, make sure to position your monitor in front of the IR reader (as instructed in the “Getting Started” section).

*NOTE: Read the device before performing any upgrades to ensure a connection has been established.*



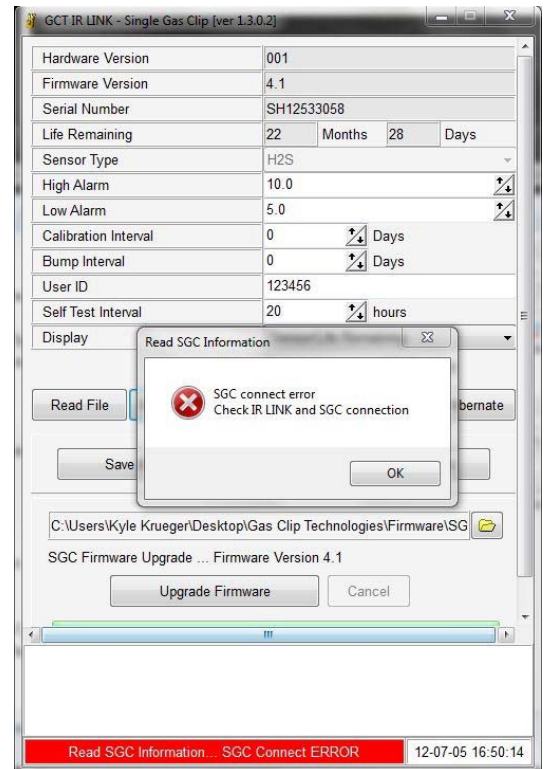
Once a successful read has occurred, click the folder icon located in bottom middle right. Select the firmware file you would like to upgrade to and then click Upgrade Firmware. This process will take approx. 30 seconds to perform. DO NOT move the unit during a firmware upgrade. Once a successful upgrade has occurred a green bar will appear with “download image...ok” (see image above).

*NOTE: Firmware upgrades may also be performed using a Docking Station.*

## Troubleshooting

**SGC Connect Error:** This error occurs when the IR Link cannot communicate with the unit. The screenshot below displays the error.

If this error occurs, check the following items: Make sure the unit is placed face down in front of the IR Link at least 1 inch. Also check that the IR window on the unit is not clogged with dirt or debris. Finally make sure the area where the unit and link are is not in a high light area (i.e. bright light bulb or bright sunlight) as light can interfere with IR connectivity.



**IR Link Connect Error:** This error occurs when the IR Link is either not connected to the computer or the driver did not install correctly. Make sure to check the USB connection on both the computer and the IR Link itself to ensure all connections are secure. If all connections are secure attempt to uninstall and reinstall

